

Bad Elf GPS



Bad Elf Functions and Products

- Basic GPS Functions
 - Speed, Heading, Accuracy, Location
- Data Logger
 - GPX and KML



Bad Elf Data Logger

- Attach Bad Elf to top of the UAS battery with industrial Velcro.
 - Ensure propellers clear payload
- When ready to map flight
 - Turn on device
 - Wait for satellites
 - Push and hold GPS button for 3 seconds
 - Fly track
 - Push and hold GPS button for 3 seconds to close track
- Go FLY!



Bad Elf Data Logger

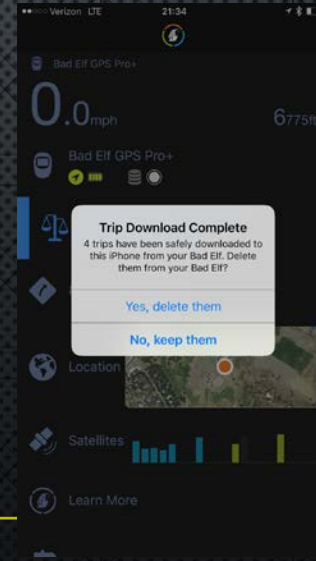
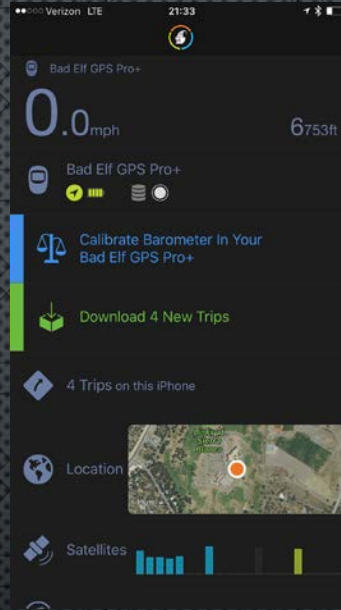
Mavic

- Attach Bad Elf to top of the Mavic battery with industrial Velcro **exactly as shown.**
 - Ensure propellers clear payload
- When ready to map flight
 - Turn on device
 - Wait for satellites
 - Push and hold GPS button for 3 seconds
 - Fly track
 - Push and hold GPS button for 3 seconds to close track
- Go FLY!



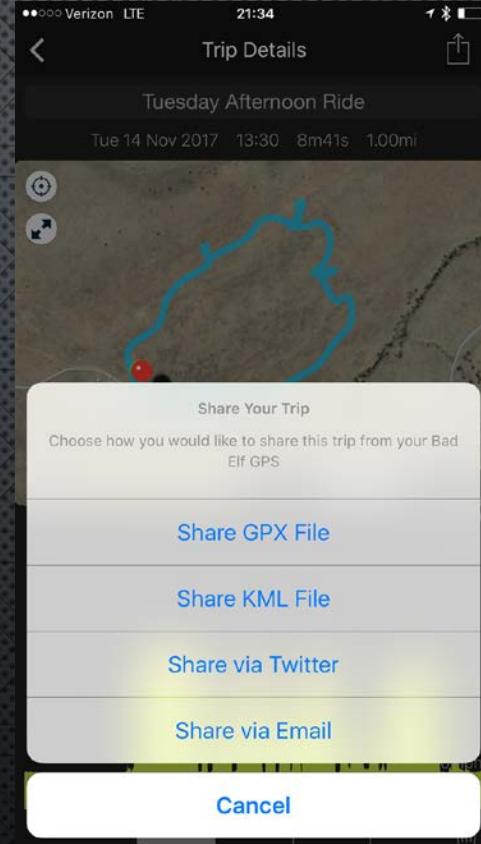
Bad Elf APP

- Download the Bad Elf App
 - [APPSTORE](#)
- Pair the Bad Elf with the iOS Device.
- Bad Elf Settings
- Download New Trips



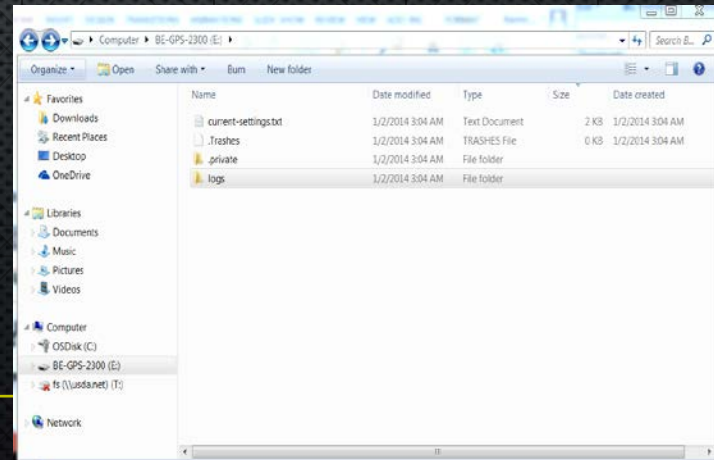
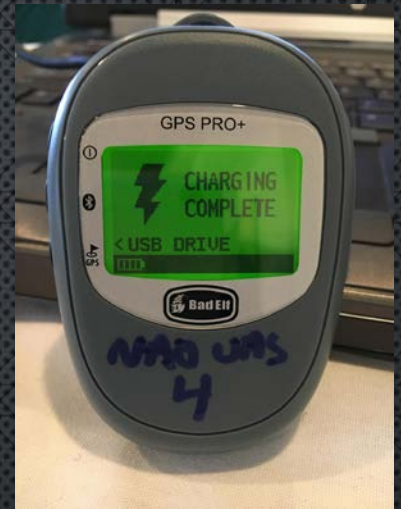
Sharing the Data

1. Air Drop
 - a. Avenza (KML)
 - b. Gaia GPS (GPX)
2. OPEN IN
 - a. AVENZA (KML)
 - b. GAIA GPS (GPX)
3. EMAIL
 - a. USE IN ARCMAP
 - b. SITUATION UNIT



Sharing the Data

- USB Drive
 - Make sure the Bad Elf is off
 - Connect the GPS with the provided cable
 - Click USB drive on the device
- Navigate to the logs folder on the device
 - Only GPX files are in the log folder

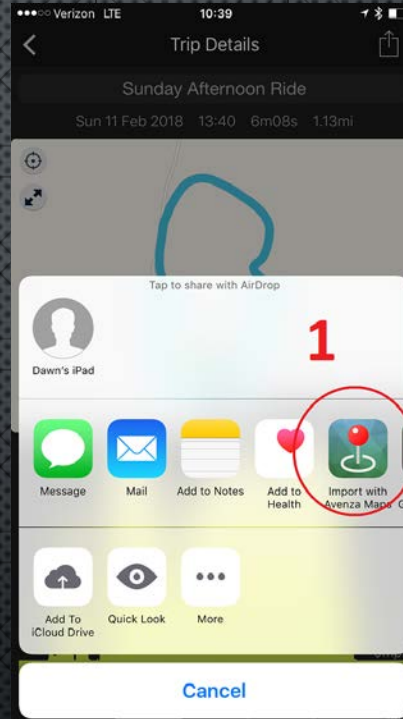


Avenza

1. OPEN IN AVENZA
 - BLM KEY IS: VDRQ-4KHA-2KM3-3MRN-9D59
 - SETTINGS, ACCOUNT DETAILS, USERNAME

- FS AVENZA PRO

1. OPEN THE MAP
 - a. GEOPDF OF THE FLIGHT AREA
2. TAP THE PIN WITH 3 BARS ICON.



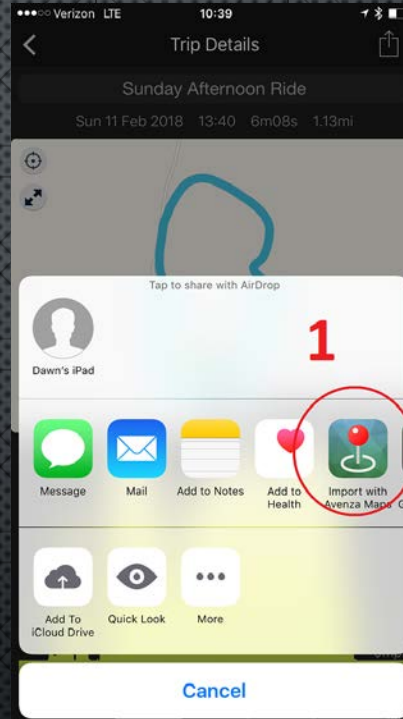
Avenza

1. OPEN IN AVENZA

- NPS KEY IS: TQT5-65BH-8HBM-9LN4-NMBQ
 - SETTINGS, ACCOUNT DETAILS, USERNAME

● USFWS KEY IS:

1. OPEN THE MAP
 - a. GEOPDF OF THE FLIGHT AREA
2. TAP THE PIN WITH 3 BARS ICON.



Avenza

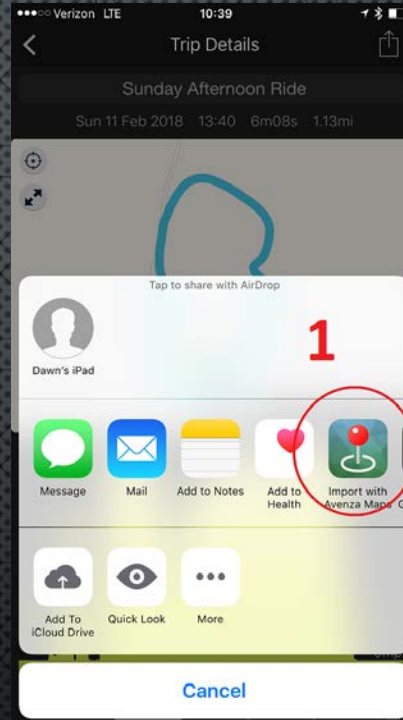
1. OPEN IN AVENZA

- NPS KEY IS: TQT5-65BH-8HBM-9LN4-NMBQ

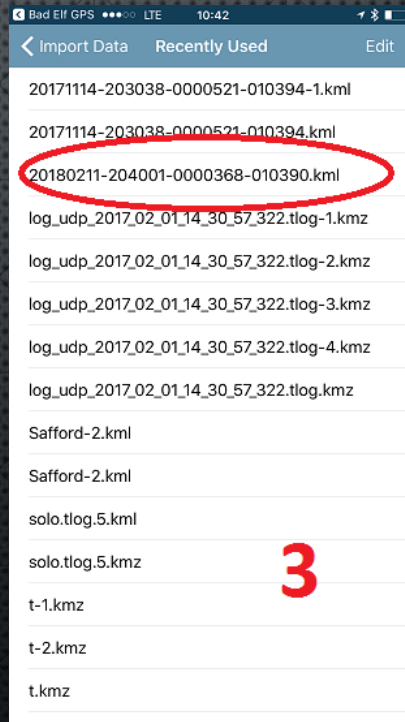
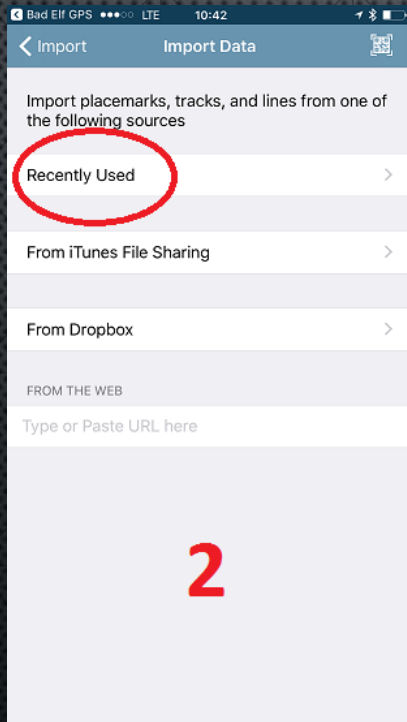
- SETTINGS, ACCOUNT DETAILS, USERNAME

1. USFWS KEY IS:

- a. SETTINGS, ACCOUNT DETAILS, USERNAME

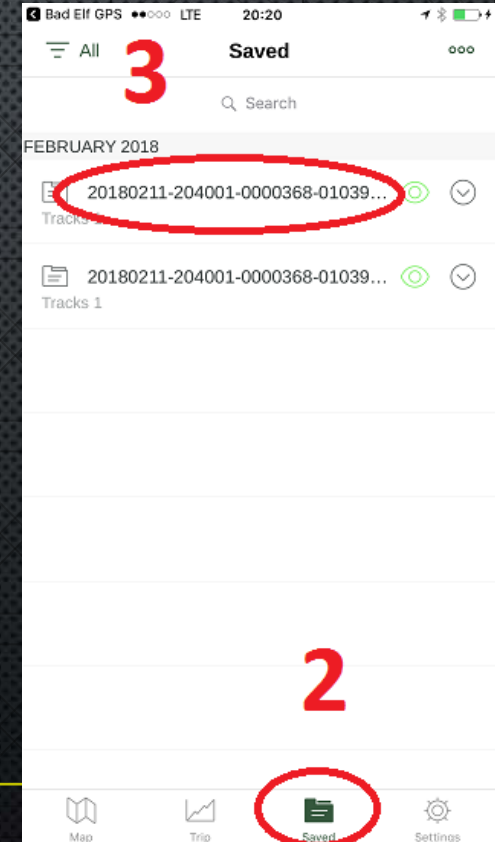
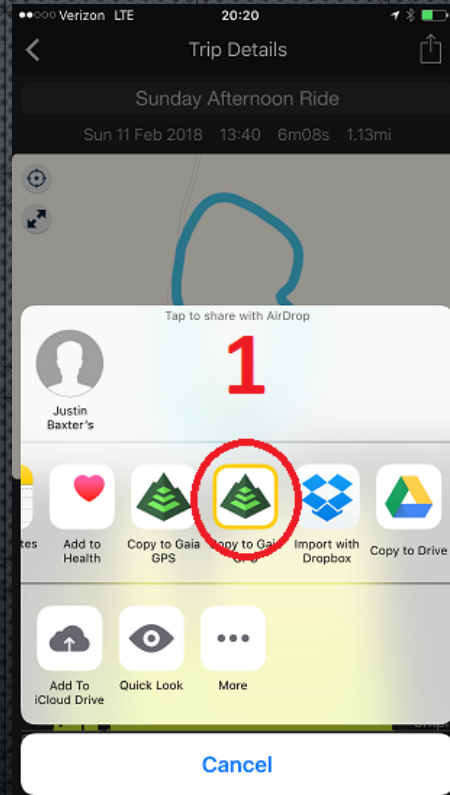


Avenza

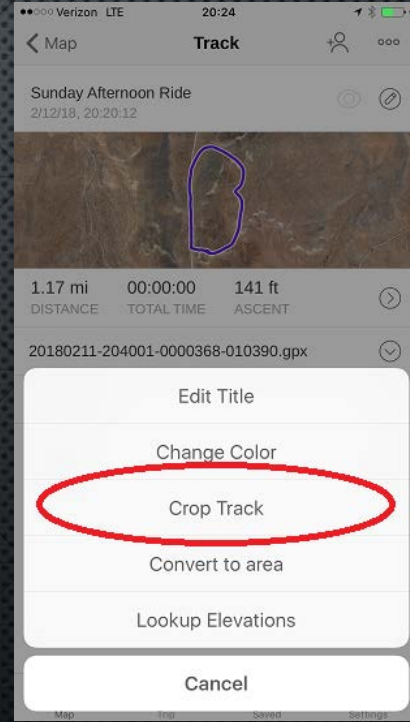
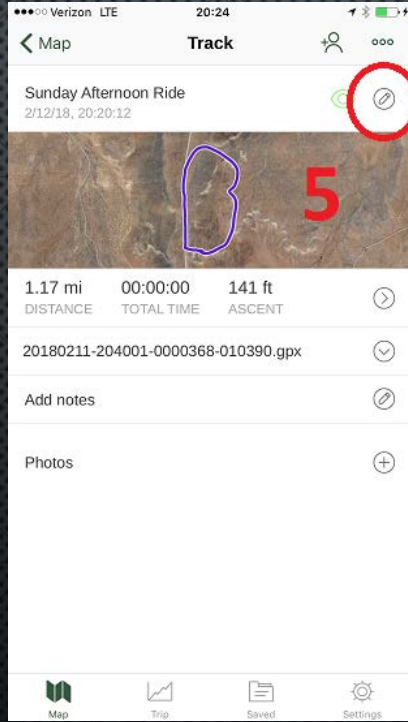


Gaia GPS

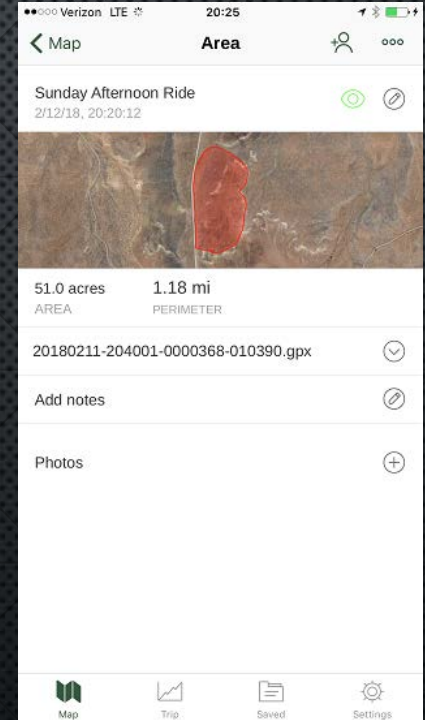
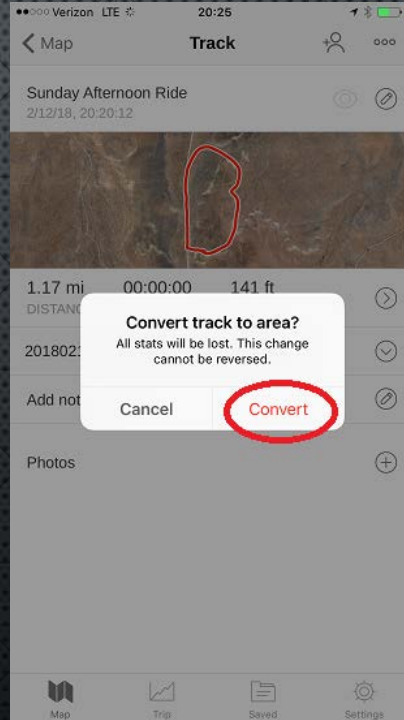
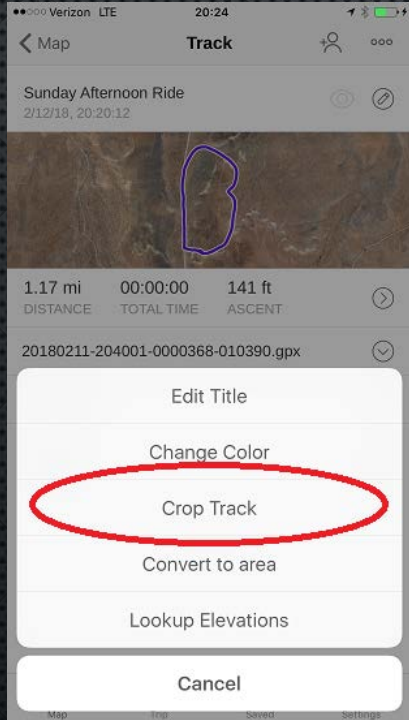
- Perimeter updates and POI from the Bad Elf GPS
- Basic Editing
- Acreage Calculations
- EMERGENCY RESPONSEFREE MEMBERSHIP



Gaia GPS



Gaia GPS



Review

- Understand the capabilities of the Bad Elf GPS.
 - Using the Bad Elf GPS, obtain a perimeter of a fire or project area.
 - Turn the collected data into the desired finished product.
 - Discuss Apps that work with the Bad Elf and their functions.
-